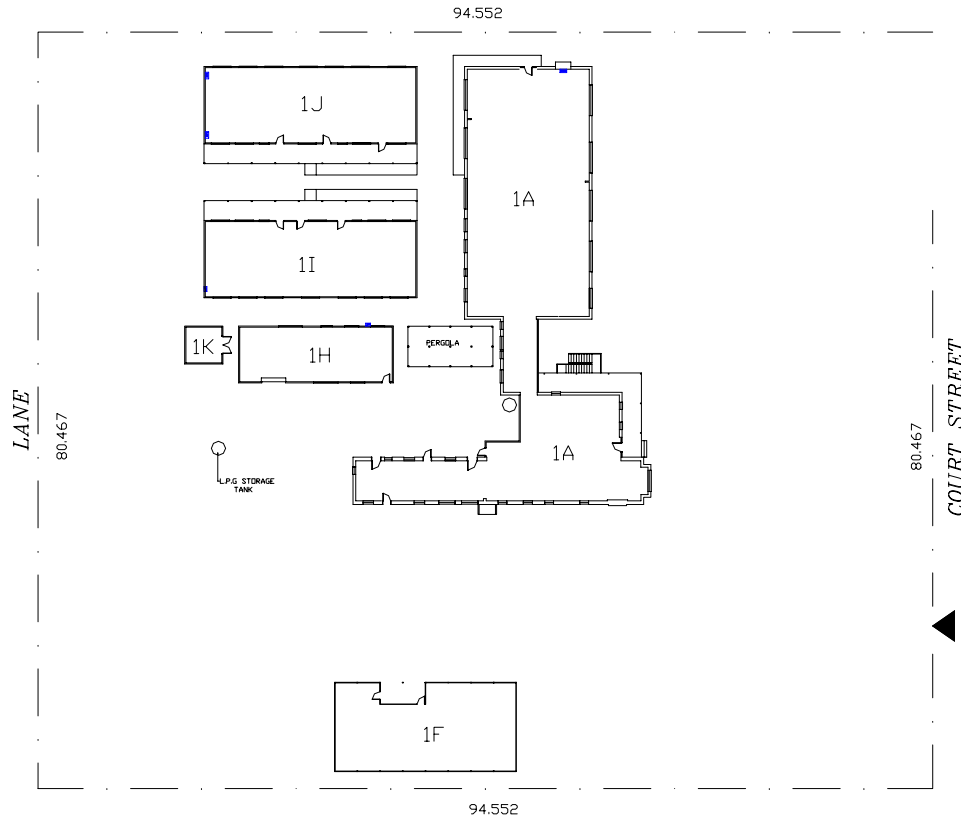


Site Plan – TAFE NSW – Western Institute – **MUDGEES CAMPUS (COURT STREET)**



- |          |   |
|----------|---|
| Block 1A | Tourism & Hospitality, Computers, Lecture rooms, Office |
| Block 1F | Pottery   |
| Block 1H | Arts  |
| Block 1J | Lecture rooms   |
| Block 1I | Library, Lecture rooms.                                 |
| Block 1K | Kiln  |